

5 KW STRIP #10 WIRE 30 AMP BRKR.

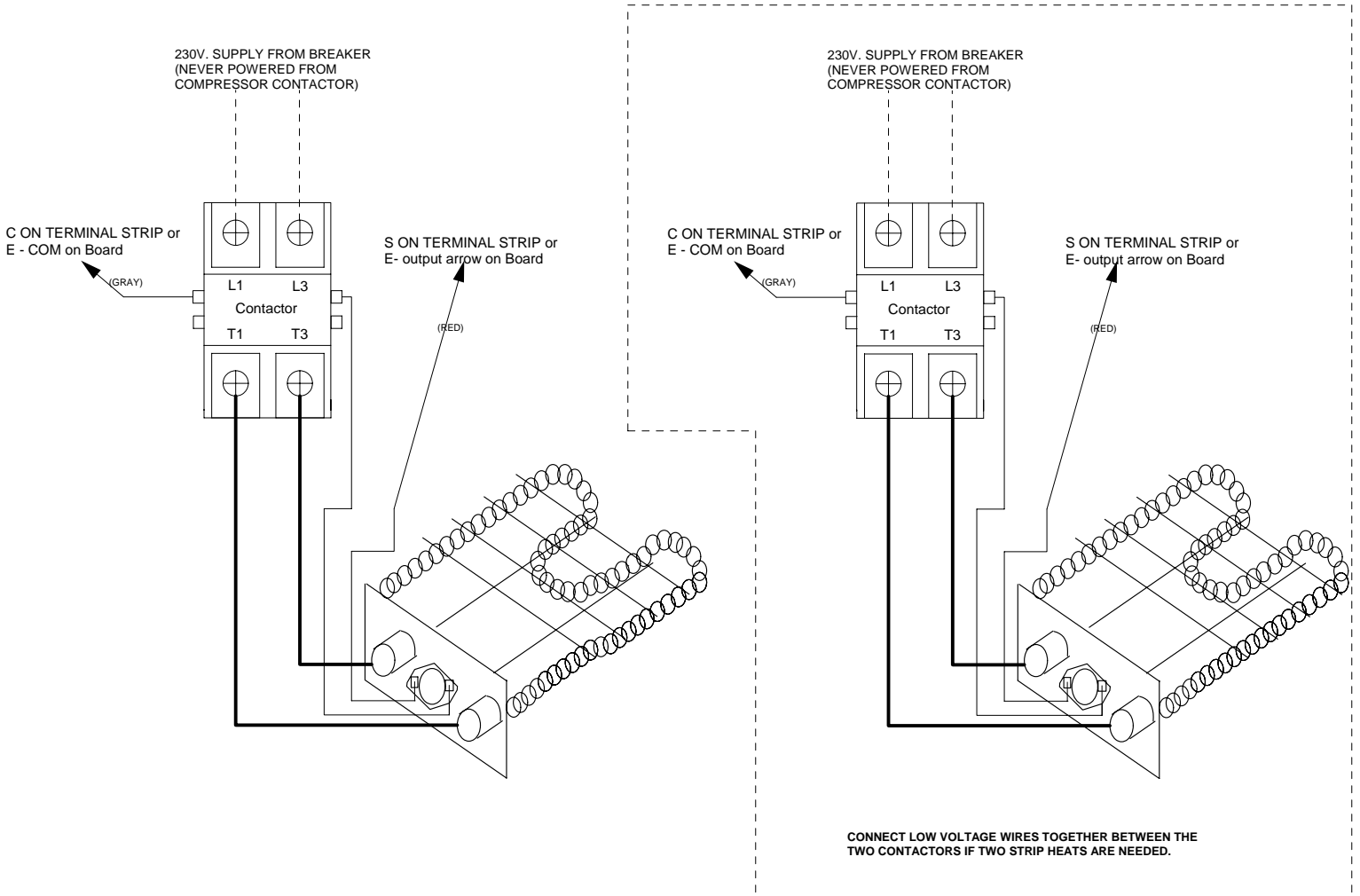
NOTE: IF MORE THAN ONE 5KW STRIP, MUST HAVE 30 AMP BRKR. PER EACH ADDITIONAL STRIP.

10 KW STRIP #6 WIRE 60 AMP BRKR.

NOTE: IF MORE THAN ONE 10KW STRIP, MUST HAVE 60 AMP BRKR. PER EACH ADDITIONAL STRIP.

USE COPPER WIRE AND  
CONNECTORS ONLY  
CONDUCTORS SUITABLE  
FOR MINIMUM 167 °F

STRIP HEAT SHOULD BE WIRED DIRECT TO THE BREAKER.  
NEVER WIRE STRIPS ON SAME BREAKER AS COMPRESSORS.



		
TITLE: STRIP HEAT OPTION		
DATE: 5/1/2006	DWG. NO. H003779	REV. 2